



THE EPPING CLUB
EVENTS COLLECTION

CULTURAL EVENTS WITH STYLE

ADULT \$79 PER PERSON | CHILDREN 2 – 12 YEARS \$50 PER PERSON
ADD DESSERT \$6.50 PER PERSON

- Grand sweeping staircase and open air terrace
- Exquisite 2 course buffet menu by our preferred external gold class caterer
- 5-hour event duration (4-hour duration for lunch events) and room hire
- Large polished parquet dancefloor
- Oval banquet guest tables or cocktail style furniture
- Standard black events chairs, cutlery, crockery, glassware
- Professional wait staff and banquet manager
- Coloured inbuilt led lighting in your function room
- Elegant decorations for guest tables (3 choices available)
- Professionally printed personalised menus for guest tables
- Lectern and microphone
- Personalised LCD screen outside your function room to display your photo

Plus the addition of ONE of the following:

- Professional disc jockey
- Retro open photo booth with backdrop, props and guest book

BEVERAGE OPTIONS

5-hour standard beverage package at \$20.00 per person

(Moore's Creek Brut Cuvee, Moore's Creek Shiraz, Moore's Creek Sauvignon Blanc, full strength & light draught beer)

OR

BEVERAGE TAB

(minimum pre-paid beverage spend of \$10.00 per person applies) Once your minimum spend has been reached you can decide to extend your beverage tab, or guests can then purchase their own beverages.

Terms & conditions apply. Minimum numbers and minimum beverage spend per person applies. Images are representative only.

Tel: (02) 9876 4357 | www.eppingclubevents.com.au | events@eppingclub.com



THE GRAND BALLROOM

The Epping Club's Ballroom is a spectacular space configurable with partitions making it suitable for different size and format events especially those wishing to have a dance floor, photobooth, entertainment, band or speciality food stations.

With impressive chandeliers, high quality finishes and stylish, contemporary furnishing this space suits all your event needs.

The Ballroom boasts four enormous in-ceiling projector screens perfect for room wide viewing of information or photo presentations. It is enhanced with a sophisticated AV offering to meet all your technical demands.

Your Epping Club Events Specialist will be able to guide you on the most suitable floorplan and room requirements in the Ballroom based on your desired event format and number of attendees.

• Natural lighting with full black out capability • Entire space pillar-less • Dedicated temperature controlled alfresco verandah • Separate dedicated events kitchens



THE GRAND SALON

The Grand Salon is an intimate space perfect for mid-sized events or as a cocktail space separate from The Ballroom.

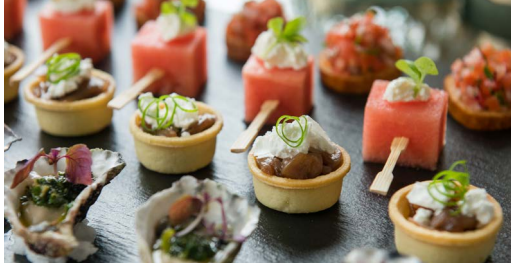
With modern, stylish finishes this space is versatile, flexible and well-appointed. The Grand Salon is enhanced with a sophisticated AV offering to meet all your technical demands.



THE BOARDROOM

The Epping Club's Boardroom is an impressive space to entertain and celebrate. As much suited to a intimate dinner as it is to a private, cocktail party this is a versatile and luxurious room.

With plush décor, high-quality finishings, dramatic lighting and adjoining the open air Terrace Verandah this event space is designed to wow.



THE VERANDAH TERRACE

The Epping Clubs al fresco terrace is a favourite stand alone event space as well as a fresh air break out space from the Ballroom.

Designed with intimate nestled seating perfect for chatting, its natural light and breezy décor make it the ideal place to refresh or entertain for day or night.

With a green wall retreat, all weather shutters and adjoining both the Boardroom and Ballroom this is both an event space in its own right and a wonderful addition to your primary event location.

If food is not being served on the Verandah some areas of this space can be designated for smoking as required.

